

State of Wyoming Corner Record

(In compliance with the CORNER PERPETUATION AND FILING ACT, Wyoming Statutes, 1997 Section 33-29-140 et. seq., and the Rules and Regulations of the Board of Professional Engineers and Professional Land Surveyors)

Reverse side of this form may be used if more space is needed.

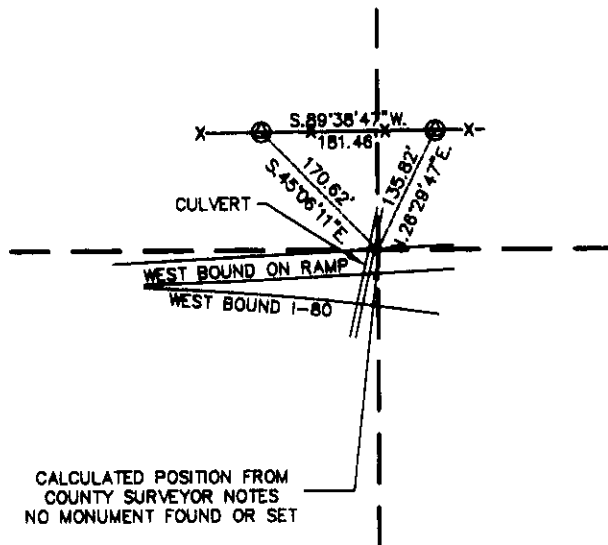
Record of original survey and citation of source of historical information (if corner is lost or obliterated). Description of corner monumentation evidence found and/or monument and accessories established to perpetuate the location of this corner. Sketch of relative location of monument, accessories, and reference points with course and distance to adjacent corner(s) (if determined in this survey). Method and rationale for reestablishment of lost or obliterated corner.

RECORD: UNKNOWN

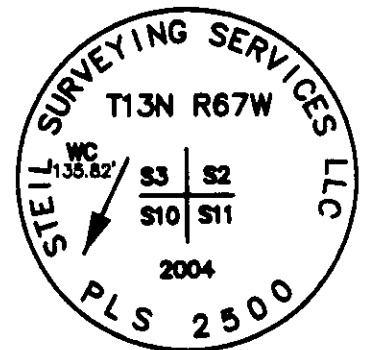
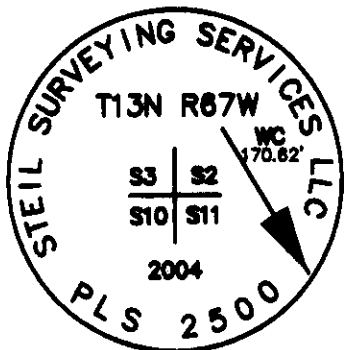
MONUMENT FOUND: RESET FROM TIES ON U.P.R.R. MAPS, COUNTY ENGINEERS RECORDS, AND WYDOT RECORDS.

MONUMENT SET: SET A 5/8" X 24" REBAR WITH A 3/4" ALUMINUM CAP, FLUSH WITH THE GROUND AT WITNESS CORNER LOCATIONS.

REFERENCES: WITNESS CORNERS AS SHOWN BELOW.



CALCULATED POSITION FROM COUNTY SURVEYOR NOTES
NO MONUMENT FOUND OR SET



RECORDED 5/06/2004 AT 4:06 PM REC# 386691 BK# 1811 PG# 1108
DEBRA K. LATHROP, CLERK OF LARAMIE COUNTY, WY PAGE 1 OF 1

Date of Field Work: 2/20/04

Office Reference: 03300

Monument Inscription

Cross Index Plat

	1	2	3	4	5	6	7	8	9	10	11	12	13	14	15	16	17	18	19	20	21	22	23	24	25
A																									
B																									
C		6	5	4	3	2	1																		
D																									
E																									
F																									
G		7	8	9	10	11	12																		
H																									
J																									
K																									
L		18	17	16	15	14	13																		
M																									
N																									
O																									
P		19	20	21	22	23	24																		
Q																									
R																									
S																									
T		30	29	28	27	26	25																		
U																									
V																									
W																									
X		31	32	33	34	35	36																		
Y																									
Z																									
	1	2	3	4	5	6	7	8	9	10	11	12	13	14	15	16	17	18	19	20	21	22	23	24	25

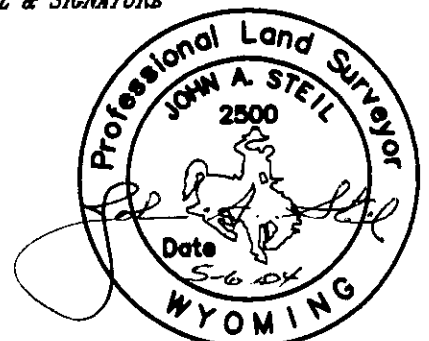
Firm/Agency, Address

STEIL SURVEYING SERVICES LLC
1102 WEST 19th STREET
CHEYENNE WY 82001

Telephone Number: **(307) 634-7273**

This corner record was prepared by me or under my direction and supervision.

SEAL & SIGNATURE



Corner Name SECTION Section 3/10/2/11, T 13 N, R 67 W, 6th P.M.
County: LARAMIE Wyoming
SBRPEPLS/PLSW: March 1994; PLSW January 1998

Cross-Index No.: E-17